

Gender inequality and self-publication are common among academic editors

Received: 4 August 2021

Accepted: 10 November 2022

Published online: 16 January 2023

 Check for updates

Fengyuan Liu ¹, Petter Holme ^{2,3}, Matteo Chiesa ^{4,5}, Bedoor AlShebli ⁶ 
& Talal Rahwan ¹ 

Scientific editors shape the content of academic journals and set standards for their fields. Yet, the degree to which the gender makeup of editors reflects that of scientists, and the rate at which editors publish in their own journals, are not entirely understood. Here, we use algorithmic tools to infer the gender of 81,000 editors serving more than 1,000 journals and 15 disciplines over five decades. Only 26% of authors in our dataset are women, and we find even fewer women among editors (14%) and editors-in-chief (8%). Career length explains the gender gap among editors, but not editors-in-chief. Moreover, by analysing the publication records of 20,000 editors, we find that 12% publish at least one-fifth, and 6% publish at least one-third, of their papers in the journal they edit. Editors-in-chief tend to self-publish at a higher rate. Finally, compared with women, men have a higher increase in the rate at which they publish in a journal soon after becoming its editor.


A recurring theme in the study of science is the accumulative advantage that elites enjoy in academia, be it highly cited scientists^{1,2}, prestigious institutions³ or influential countries⁴. Elites reinforce their status via scientific publications^{1,5}, and editors play a key role in this process by having the final say about what gets published^{6,7}, thereby controlling the channel through which scientists receive prestige and recognition⁸. Moreover, editors themselves are scientific elites, who have gained recognition from their community as experts in their fields^{9,10}. Therefore, characterizing the appointment and publication patterns of editors is key to understanding scientific elites.

Unfortunately, not all scientists have an equal chance of becoming editors. Women, historically marginalized in academia, face additional barriers in attaining scientific opportunities in general^{11–14}, and elite status in particular^{15–19}. In this vein, there has been widespread, yet fragmented, evidence showing that women are underrepresented on editorial boards^{20–28}. Gender diversity on editorial boards is not only important in its own right²⁹, but also has broader implications. An inclusive editorial board signals that the journal is open to all authors³⁰,

implying that the underrepresentation of female editors may create a vicious cycle that further deters women from participating in science²⁹.

While being the gatekeepers of science, editors also actively seek opportunities to publish. Although some editors are full-time professionals (for example, those handling journals such as *Cell*, *Nature* and *Science*), the vast majority of editors are research-active academics, who perform editorial duties in addition to being a scientist. Such editors would benefit from publishing original research articles, as the evaluation of academics heavily relies on bibliometric outcomes^{1,31}. Sometimes editors publish their findings in the journals they edit^{32–38}, occasionally resulting in controversies^{39–42}. Such controversies are fuelled by the possibility that the editors' submissions are treated favourably, which may be considered as 'an abuse of the scientific publishing system'^{41,42}.

Both the self-publishing behaviour of editors and the underrepresentation of women have received widespread attention in different disciplines; see Supplementary Tables 1 and 2 for a summary of this literature. Nevertheless, key aspects remain missing due to the lack of a longitudinal dataset that spans multiple disciplines. In particular, none

¹Computer Science, Science Division, New York University Abu Dhabi, Abu Dhabi, UAE. ²Department of Computer Science, Aalto University, Espoo, Finland. ³Center for Computational Social Science, Kobe University, Kobe, Japan. ⁴Laboratory for Energy and Nano Science, Khalifa University of Science and Technology, Abu Dhabi, UAE. ⁵Department of Physics and Technology, UiT - The Arctic University of Norway, Tromsø, Norway. ⁶Social Science Division, New York University Abu Dhabi, Abu Dhabi, UAE.  e-mail: bedoor@nyu.edu; talal.rahwan@nyu.edu

of the studies compare the gender gap and self-publishing behaviour across disciplines, as they only focus on one discipline each. The only exceptions are the work of Mauleón et al.¹⁰ and Bošnjak et al.³⁴, but their analyses are restricted to Spanish and Croatian journals, respectively. Another limitation in the literature is the lack of comparison between editors and other research-active scientists, with the exception of Mauleón et al.¹⁰, whose analysis is restricted to Spanish journals only. Such a comparison is critical, as it provides a discipline-specific, and year-specific, benchmark against which gender disparity and editor self-publishing can be measured.

In addition to the comparison between editors and research-active scientists, other comparisons can be informative when analysing the self-publishing behaviour of editors. First, by comparing editors with their colleagues—those who serve on the same editorial board—one would account for the culture of the journal in question, thereby detecting editors whose publication rate is high relative to the norm in that journal. Second, by comparing the publication patterns of the editors before and after the start of their editorship, one might detect whether there is a notable difference in the number of papers they publish in their journal right after assuming their editorial role. Third, by comparing female with male editors, one might determine whether there are marked gender differences in self-publication rates. These critical comparisons are absent from the literature, except for the works of Campanario⁸, Walters³⁸ and Mani et al.³⁵ The former two compared editors with other scientists, while the latter paper compared the publication pattern before and after one becomes an editor, but each of these studies considered only a single subdiscipline. As for any comparison between male and female editors, and between editors and their colleagues, these are completely absent from the literature.

Here, to fill the aforementioned gaps in the literature, we parsed more than 173,000 editorial pages from Elsevier—a publisher behind one-fifth of global research output, garnering one-quarter of citations worldwide⁴³. This enabled us to extract information pertaining to 103,000 editors, including their affiliations, their disciplines, the names of the journals they edited and the years during which they served as editors. Collectively, these editors served on 85,000 issues of 1,167 Elsevier journals spanning 15 disciplines and multiple decades; see Supplementary Note 1 for details on how scientists' disciplines were inferred, and Supplementary Table 3 for the distribution of editors across disciplines. Furthermore, following other studies in the literature^{24,44–47}, we used a state-of-the-art classifier (Methods), allowing us to identify the gender of 81,000 editors and 4,700 editors-in-chief with high confidence; see Supplementary Table 4 for the distribution of those editors across disciplines. Finally, to retrieve the publication record of any given editor, we used Microsoft Academic Graph (MAG)—a dataset of 220 million publications and 240 million scientists^{48,49}, which has been widely used in the Science of Science literature^{44,47,50–55}. More specifically, we matched the editors in our dataset to the scientists in MAG based on their names, affiliations and disciplines, thereby identifying the publication records of 20,000 editors and 1,600 editors-in-chief who had a unique match in MAG; see Methods for more details on the data collection, and Supplementary Table 5 for the distribution of those editors across disciplines. The resulting datasets offer a unique opportunity to address the aforementioned shortcomings in the literature, and analyse editorial patterns at an unprecedented scale.

Results

Editor characteristics

First, we explore the characteristics of editors-to-be (here, we refer to editors in any role as 'editors') before the start of their editorship and compare them with an average scientist. To this end, for every editor, we randomly select a scientist whose discipline and academic birth year—the year when their first paper was published—match that of the editor. Then, we compare the pair in terms of citation count, paper

count, h-index, collaborator count and affiliation rank. Note that the attributes of the editor are measured before their editorship starts, implying that the measurements are not influenced by the potential boost in visibility associated with being an editor. Moreover, the scientist being compared with the editor has their attributes measured in the same year, implying that the pair had the same career length when the measurements were taken. Finally, it should be noted that those scientists may themselves include editors of different publishing houses, as would be expected from the average scientist in MAG whom those scientists are meant to represent.

If editors are scientific elites, we would expect their bibliometric outcomes to be much higher than that of average scientists. Indeed, compared with an average scientist of the same academic age and in the same discipline, an editor tends to have seven times more papers (102 versus 13), eight times more citations (1,786 versus 193) and four times greater h-index (16 versus 3); see Fig. 1a–c. Note that these results disregard editorials; see Methods for more details on how editorials were identified. As for the number of collaborators, an editor has on average 163 at the start of the editorship, while the average scientist has about 29 (Fig. 1d). In terms of affiliation, 35% of editors are affiliated with a top-ranked institution—one that is ranked among the top 100 according to the Academic Ranking of World Universities⁵⁶—compared with just 20% for scientists (Fig. 1e). Supplementary Fig. 1 shows the distribution of the data in Fig. 1a–d, while Supplementary Figs. 2–6 show a breakdown of Fig. 1a–e over disciplines. Moreover, instead of sampling a single scientist per editor, we sample 50 and 200 with replacement, and find broadly similar trends (see Supplementary Figs. 7 and 8).

Next, we analyse how the characteristics of editors upon the start of their editorship have changed over the past four decades. Specifically, let (e, j) denote an editor–journal pair such that editor e served on journal j . Moreover, let year $_1^{(e, j)}$ be the first year of the editorship, and let year $_0^{(e, j)}$ be the year that precedes it. Then, for any given year $y \in [1980, 2017]$, we consider every e, j such that year $_0^{(e, j)} = y$, and measure the characteristics of e and their matched scientists at the year y . The results are depicted in Fig. 1f–k. As can be seen, the expected number of citations that an editor has accumulated by the start of their editorship has increased almost tenfold over the past decades (from 311 in 1980 to 3,014 in 2017), the number of accumulated papers has more than quadrupled (from 34 to 138), the h-index has tripled (from 7 to 21), the number of collaborators has increased more than sixfold (from 38 to 240), while the percentage of those affiliated with top-ranked institutions has decreased (from 46% to 32%). Next, we examine the gap between editors and scientists over the past decades. Comparing 1980 with 2017, we find that the gap in productivity has increased almost fivefold (from 27 in 1980 to 124 in 2017), the gap in impact has increased more than ninefold (from 289 to 2706), the gap in h-index has more than tripled (from 5 to 17), while the gap in collaborator count has increased more than sixfold (from 32 to 202). As for the percentage of those affiliated with a top-ranked institution, it has decreased over the years for both editors and scientists at about the same rate (from 46% to 32% for editors, and from 28% to 15% for scientists), suggesting that this trend is not related to changes in the way editors are recruited, but rather to changes in the global demographics in academia. Again, these results remain unchanged when sampling 50 and 200 scientists per editor. Finally, looking at the academic age of the editors upon the start of their editorship, we find that it has increased from 15 years in 1980 to about 20 years in 2017 (Fig. 1k). These findings suggest that, when it comes to assuming an editorial role, being impactful, productive, connected and experienced seem to matter more than being affiliated with a top-ranked institution. This seems to persist even when excluding Biology—the discipline with the highest h-indices, citation count, collaborator count and editor count—as shown in Supplementary Fig. 9. Note that in Fig. 1f–k an anomaly can be seen around the years 1998–2003. Upon enquiry, Elsevier

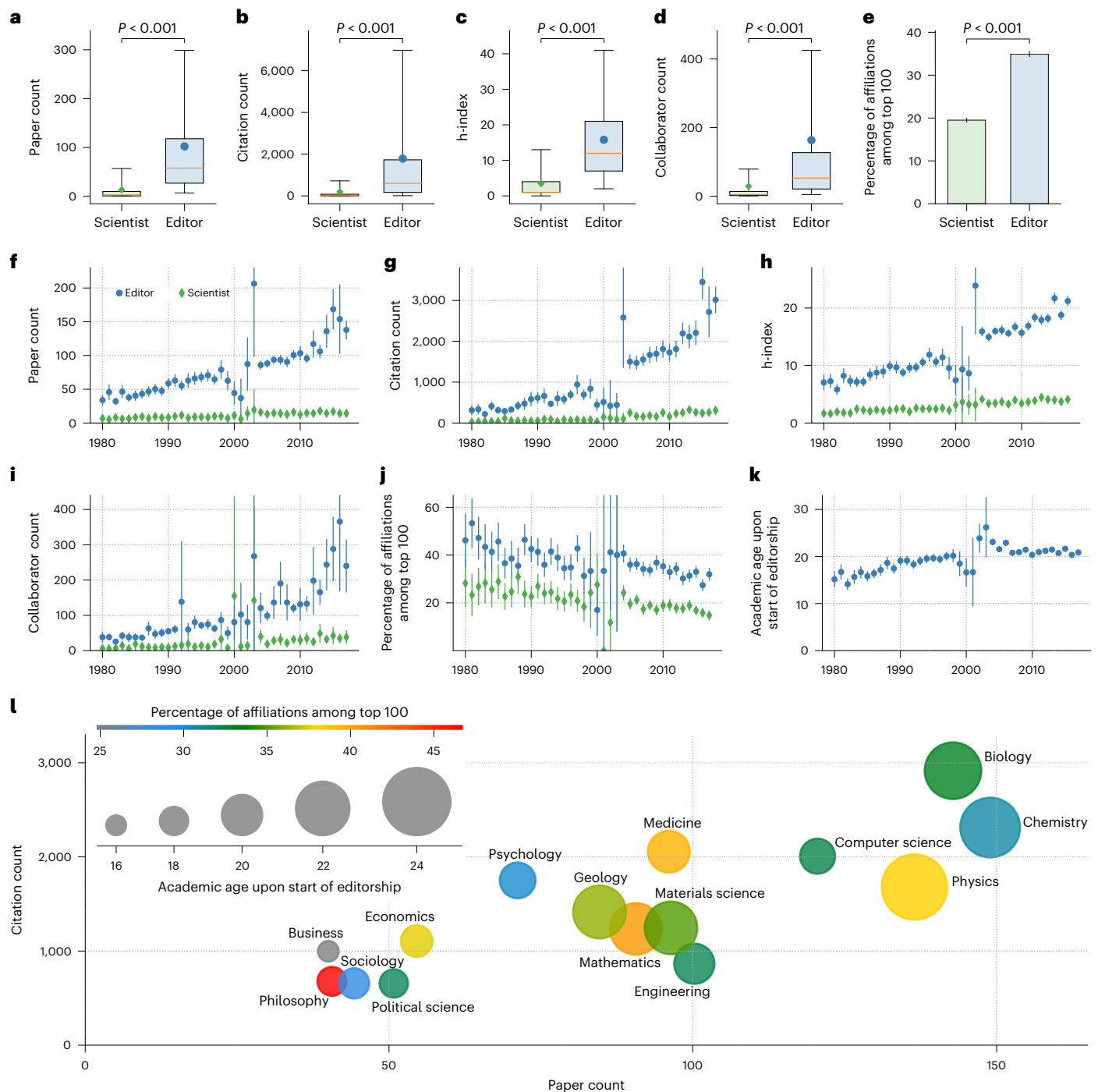


Fig. 1 | Editors’ characteristics upon the start of editorship. Each editor ($n = 19,064$) is compared with a randomly selected scientist whose discipline and first year of publication matches that of the editor; descriptive statistics are measured at the year preceding the start of the editorship, with error bars representing the 95% CI. **a–e**, Comparing editors with scientists in terms of paper count (**a**), citation count (**b**), h-index (**c**), collaborator count (**d**) and percentage of those whose affiliation ranks among the top 100 (**e**); circles and diamonds represent the sample means of editors and scientists, respectively; the boxes extend from the lower to upper quartile values of the data, with a line at the median; whiskers extend until the 5th and the 95th percentiles; P values

are calculated using two-sided Welch’s T-tests (**a–d**) and two-sided Fisher’s exact tests (**e**); all $P < 10^{-250}$. **f–j**, Comparing editors with scientists over time in terms of paper count (**f**), citation count (**g**), h-index (**h**), collaborator count (**i**) and percentage of those whose affiliation ranks among the top 100 (**j**). **k**, For each year, the mean academic age of editors upon the start of their editorship. **l**, Editors’ paper count (x axis), editors’ citation count (y axis), editors’ academic age (circle size) and percentage of editors whose affiliation ranks among the top 100 (circle colour) across disciplines; the differences in the circle sizes are exaggerated to improve visibility. Data are presented as mean \pm 95% CI (**e–k**).

representatives clarified that this anomaly is an artefact of an incomplete capture of all articles during the first years of their transition from print to online.

Having analysed how different characteristics of editors change over time, we now compare those characteristics across disciplines. More specifically, Fig. 1l compares editors from different disciplines in

terms of the number of citations and papers that an editor has accumulated, as well as their affiliation rank and academic age, upon the start of the editorship. We find that Biology recruits the most highly cited editors, with 2,900 citations on average, while Chemistry recruits the most productive editors, with an average of 149 papers. In contrast, the impact seems to matter the least when recruiting editors in Philosophy, Sociology and Political Science, while productivity seems to matter the least when recruiting editors in Business and Philosophy. As for academic age, we find that Business recruits the youngest editors, with 16 years of experience on average, while Physics recruits the eldest, with 24 years of experience. We calculate the average academic age of editors across disciplines, and find it to be just over 20 years. Finally, in all disciplines, the percentage of editors affiliated with a top-ranked institution ranges from 25% to 47%, with Philosophy having the greatest percentage.

Gender composition of editors

We conclude our exploratory analysis by studying gender disparity among editors. As can be seen in Fig. 2a, although women are already underrepresented among scientists (26% of all unique scientists in MAG), they are even more underrepresented among editors and editors-in-chief (14% and 8%, respectively). Moreover, the gap remained stable over the past five decades; the proportion of female editors has consistently remained around half that of female scientists, although gender parity has been steadily increasing in science in general (Fig. 2b). For example, in 2017, women represented 36% of scientists, but only 18% of editors; these proportions are extremely similar to those in 1970, when women represented 11.3% of scientists and 5.7% of editors. As for female editors-in-chief, their proportion has remained consistently smaller than that of female editors since 1970. These broad trends seem to persist when excluding Biology—the discipline with the highest h-indices, citation count, collaborator count and editor count—as shown in Supplementary Fig. 10.

Let us now examine the gender disparity across disciplines. Figure 2c depicts the proportion of female editors against that of female scientists across disciplines during the 1970s, 1980s, 1990s, 2000s and 2010s. Apart from Sociology, the proportion of female scientists in any given discipline has remained greater than the proportion of female editors in that discipline; see how the vast majority of shapes fall under the diagonal. Similar patterns are observed for editors-in-chief (Supplementary Fig. 11). To obtain a better understanding of this phenomenon, we analysed the length of editorial careers, that is, the number of years during which editors assume their role. The box plot in Fig. 2d compares the average editorial career length of women versus men, while the scatter plot compares these quantities across disciplines. As can be seen, the editorial career length of men (mean 5.03; 95% confidence interval (CI) 4.99 to 5.08) is greater than that of women (mean 4.24; 95% CI 4.17 to 4.32; $t_{80,774} = 15.02$, $P < 0.001$, $\beta = 0.15$, 95% CI 0.13 to 0.16); this holds across all disciplines except Sociology. Supplementary Fig. 12 shows similar patterns for editors-in-chief (mean of men 3.93; 95% CI 3.78 to 4.07; mean of women 2.62; 95% CI 2.41 to 2.84; $t_{4,685} = 6.27$, $P < 0.001$, $\beta = 0.28$, 95% CI 0.22 to 0.34), with the editorial career length of male editors-in-chief being greater than that of their female counterparts in all disciplines except Engineering, Geology and Materials Science.

As we have shown thus far, women have been consistently underrepresented on editorial boards across disciplines over the past decades. Let us now investigate whether this phenomenon can be explained by gender differences in productivity, impact and career lengths, or whether additional hidden factors are at play. To this end, we use a randomized baseline model whereby each editor (or editor-in-chief) is replaced with a randomly chosen scientist who may have a different gender but is identical in terms of discipline and academic age (just like the matched scientists in Fig. 1), and similar in terms of productivity and impact (both binned into deciles). In this model, the randomly selected scientist replaces the original editor for the entire duration

of his/her editorial career. Such a null model simulates a world where the editors in each discipline are recruited solely based on their experience and research output while completely disregarding their gender. We generated 50 such worlds and computed the average percentages of female editors and editors-in-chief therein. It should be noted that such analysis cannot be done using any of the datasets previously considered in the literature, as it requires the publication records of not only the editors but also all research-active scientists in any given discipline. The results of this analysis are depicted in Fig. 2e. As can be seen in the left panel, the representation of women among editors in a randomized world exhibits similar trends to those observed in the real world. This suggests that the gender gap among editors can be explained by the lack of women with sufficiently high productivity and impact, which, in turn, can be explained by attrition of women from academia⁴⁷. In contrast, looking at the right panel of Fig. 2e, we find a clear and persistent gap between the real and counterfactual worlds in terms of the proportion of female editors-in-chief. This suggests that factors other than career length, productivity and impact may be at play, and these factors seem to persist over the past five decades.

Editors' self-publishing behaviour

Having analysed the gender disparity in editorial boards, we now shift our attention to another interesting aspect of editorship—the fact that some editors publish original research in the journal they edit. To reiterate, editorials are consistently excluded throughout this study; see Methods for details on how editorials are identified. We start off by analysing the editors' self-publication rate—the percentage of their papers published in their own journal—during the 5-year period following the start of their editorship. Based on this, as well as the fact that the publication records we extract from MAG do not go beyond 2018, we restrict this analysis to the 12,995 editors who start editing their respective journals no later than 2014. For editors who quit before completing 5 years, the self-publication rate is measured only over the years during which they serve as editors, rather than over the full 5-year period following the start of their editorship. Let us start by examining the cumulative distribution of self-publication rates. We find 24% of editors publish at least one-tenth of their papers in the journal they edit (Fig. 3a). There is also a considerable percentage of editors who publish at least one-fifth of their papers (12% of editors) or even one-third of their papers (6% of editors) in their own journal. Among editors-in-chief, these percentages are even higher (Fig. 3b). More specifically, 32% of editors-in-chief publish at least one-tenth of their papers in the journal they edit, 19% self-publish at least one-fifth of their papers and 11% self-publish one-third of their papers. For a breakdown of these distributions across disciplines, see Supplementary Figs. 13 and 14. Next, we examine the correlation between the self-publication rate of the editors-in-chief and their editorial board (Fig. 3c). To improve the visualization, the data points are plotted on a log-log scale while omitting zero values; see Supplementary Fig. 15 for a linear-scale version of this plot. As can be seen, there is a significant positive correlation between the self-publication rate of the editor-in-chief and that of the editorial board, suggesting that the two are linked.

To better understand these patterns, for every e, j pair we compare e with randomly selected scientists who are not editors of j but are similar to e in terms of gender, discipline, rank of first affiliation and years during which they are research-active. Additionally, we ensure that e and their matched scientists are similar in terms of the rate at which they publish in j up to year $t_0^{(e,j)}$. Note that this matching process is different from the two matching processes used earlier in Figs. 1 and 2e; see Methods for more details. Also note that the matched scientists may themselves be editors of other journals. As such, the outcome of this analysis reflects the difference between those who edit j and those who do not, rather than the difference between editors and non-editors. The results of this analysis are depicted in the upper row of Fig. 3d. As shown in this figure, regardless of the rate at which e

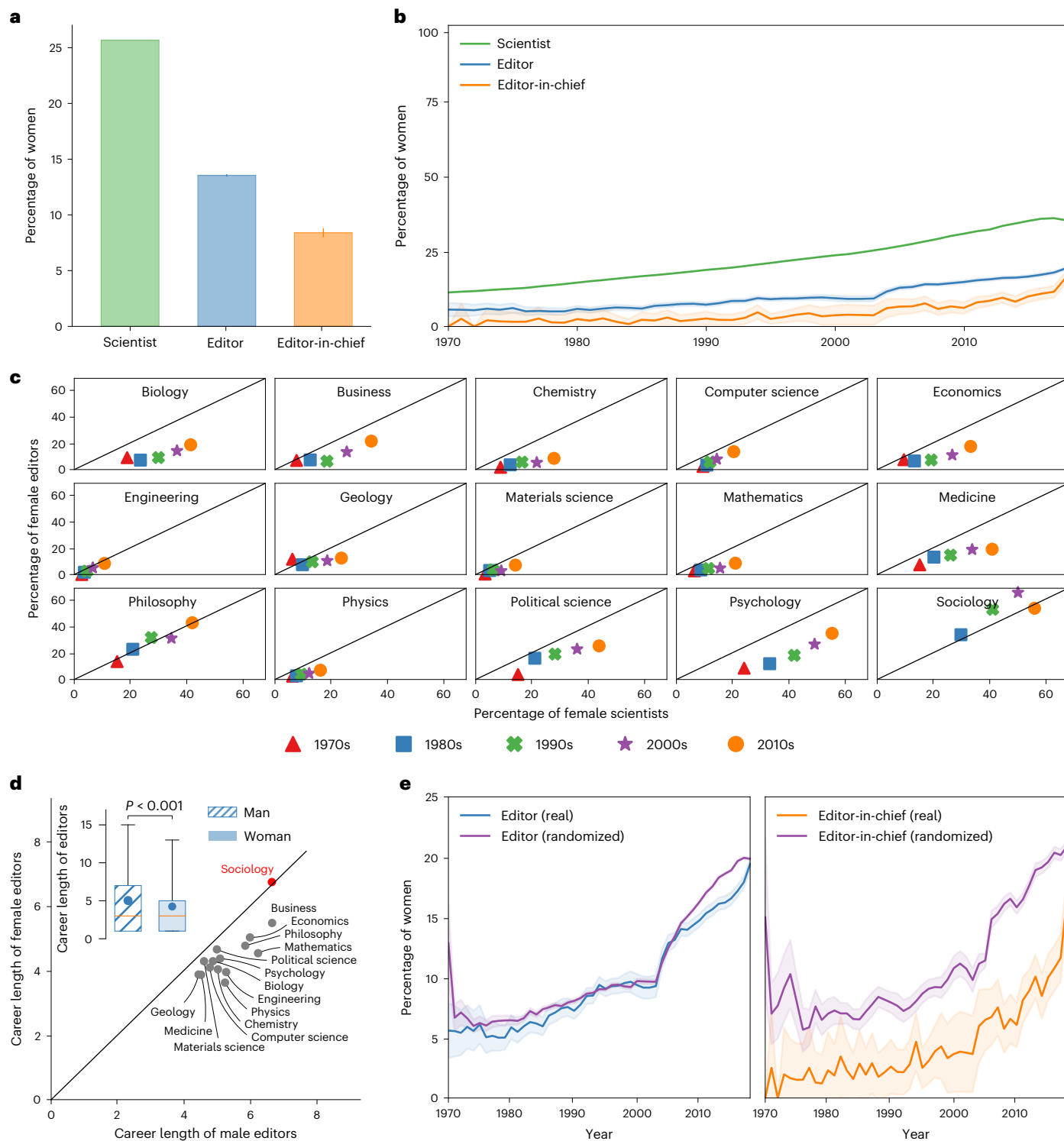


Fig. 2 | Gender disparity in editorship. **a**, Percentage of women among scientists ($n = 42,831,834$), editors ($n = 80,776$) and editors-in-chief ($n = 4,692$). **b**, Percentage of women among scientists, editors and editors-in-chief over time. **c**, Percentage of female editors against percentage of female scientists across disciplines in the 1970s, 1980s, 1990s, 2000s and 2010s. **d**, Average editorial career length of female ($n = 12,644$) versus male editors ($n = 68,132$) overall (inset, with circles and diamonds represent the sample mean of man and woman, respectively; the boxes extend from the lower to upper quartile values

of the data, with a line at the median; whiskers extend until the 5th and the 95th percentiles) and across disciplines (scatter plot); red highlights the discipline in which the career length of female editors is greater than that of male editors; P values are calculated using two-sided Welch's T-test (inset); the exact P value is 1.46×10^{-50} . **e**, Percentage of women among editors and editors-in-chief in real versus randomized data over time. Error bars and shaded regions represent 95% CI. Data are presented as mean \pm 95% CI (**a**, **b** and **e**).

publishes in j , there is a marked gap between e and their matched scientists. This observation suggests that the difference in the rate at which e and their matched scientists publish in j is associated with e

becoming an editor of j , bearing in mind that both of them published in j at comparable rates before year $t_0^{(ej)}$ as shown in Supplementary Fig. 16 and Supplementary Table 6. A possible explanation for the

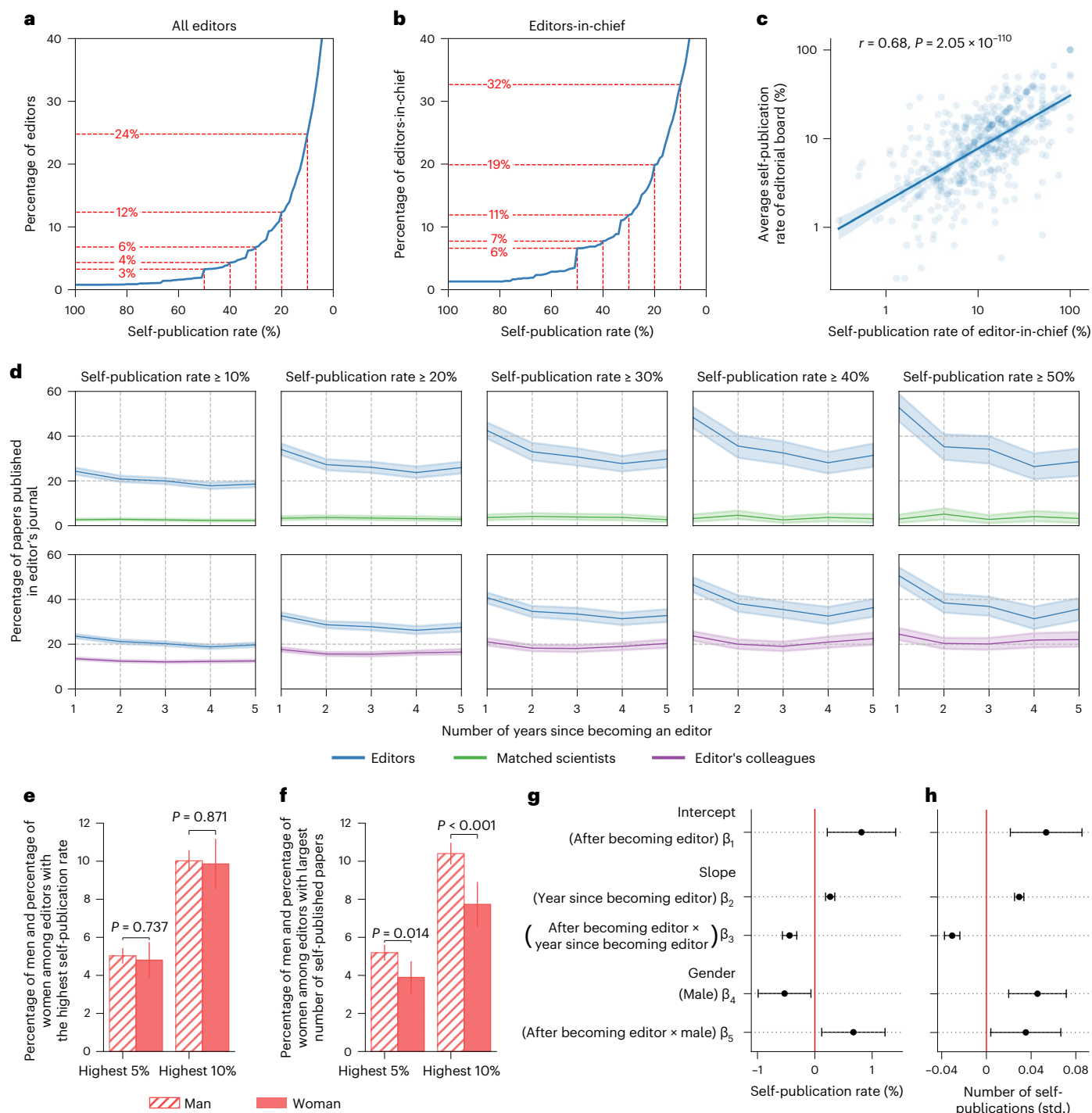


Fig. 3 | Self-publication rates. **a**, Cumulative distribution of editors’ self-publication rate, highlighting the proportion of those whose rate is $\geq 0\%$, $\geq 20\%$, ..., $\geq 50\%$. **b**, The same as **(a)** but for editors-in-chief. **c**, Correlation between the self-publication rates of editors-in-chief and their editorial boards; r represents the two-sided Pearson correlation coefficient, while the shaded region represents 95% CI of the regression estimate. **d**, Comparing editors whose self-publication rate is $\geq 10\%$, $\geq 20\%$, ..., $\geq 50\%$ to their matched scientists (upper row) and to their colleagues (lower row) in terms of the percentage of papers published in the editor’s journal. **e**, Out of all men and women, the percentage

of those who fall among the top 5% and 10% of editors with the highest self-publication rates; P values are calculated using two-sided Fisher’s exact tests, $n_{\text{male}} = 11,017, n_{\text{female}} = 1,978$. **f**, The same as **(e)**, but for those who have the largest number of papers published in their own journal (the exact P value for highest 10% is 2.08×10^{-4}). **g**, Regression-estimated temporal trend of the self-publication rate during the 5 years before, and the 5 years after, one becomes an editor; see Supplementary information for model specifications. **h**, The same as **(g)**, but the outcome is the number of self-published papers, measured in terms of standard deviations (std.). Data are presented as mean \pm 95% CI in **(d)** through **(h)**.

observed increase in publication rate is the journal’s culture, whereby editors are expected to contribute papers as part of their editorial duties. To determine whether this is the case, for every editor e whose self-publication rate is $\geq 10\%$, $\geq 20\%$, ..., $\geq 50\%$, we compare the

self-publication rate of e to that of the average editor serving at the same time on the same editorial board. This comparison considers the years after, but not before, e becomes an editor, as these are the years during which the publication rate of e in j could be influenced by the

journal culture. As shown in the bottom row of Fig. 3d, regardless of *e*'s self-publication rate, they publish in *j* at a greater rate than their average colleague.

Finally, we check whether there exist gender differences in terms of self-publication rate, as well as the number of self-published papers. To this end, we first calculate the percentage of men, and the percentage of women, who fall among the top 1%, 2%, ..., 10% of editors with the highest self-publication rates (Fig. 3e and Supplementary Fig. 17a). We find that men and women are equally likely to be found among those with the highest self-publication rates (top 5%: 5.03% male, 4.8% female, $P = 0.737$; top 10%: 10.02% male, 9.86% female, $P = 0.871$, Fisher's exact test). In other words, the gender composition of those with very high self-publication rates roughly reflects that of all editors. However, if we calculate the percentage of men, and the percentage of women, who fall among the top 1%, 2%, ..., 10% of editors with the largest number of self-published papers (Fig. 3f and Supplementary Fig. 17b), we find more men among those with the highest numbers of self-published papers, and this difference is statistically significant (top 5%: 5.19% male, 3.89% female, $P = 0.014$; top 10%: 10.4% male, 7.74% female, $P < 0.001$, Fisher's exact test). In other words, while men account for 84.8% of all editors, they account for 88.2% of the top 10% editors with the highest number of self-published papers.

To further investigate the gender differences in self-publication behaviour, we introduce a regression model to estimate the temporal trend of an editor's self-publication rate each year, while allowing a structural break of the trend to happen around the time that one becomes an editor. Additionally, the regression model controls for gender as well as journal fixed effects (Fig. 3g and Supplementary Table 7). The model indicates that the self-publication patterns of editors exhibit statistically significant discontinuity around the time when the editorship starts, as both the intercept and the slope change significantly, providing further evidence of the link between becoming an editor of a journal and increasing the rate at which one publishes in that journal. The model also indicates that, around the start of the editorship, male editors show a higher increase in their self-publication rates compared with female editors. We repeat the same regression analysis but change the outcome to be the number of self-published papers per annum (Fig. 3h and Supplementary Table 8). Again, the model shows that the self-publication patterns of editors exhibit significant discontinuity around the time when the editorship starts, and male editors have a higher increase in the number of self-published papers after becoming editors.

To understand the limits of the above phenomenon, that is, the extent to which editors self-publish while continuing to serve on the editorial board, we identified the 15 editors who publish the highest percentage of papers in their journals during editorship. For each of them, we plotted the number of papers published per year throughout their scientific careers aggregated over 5-year periods, highlighting in different colours the proportion of the papers published in the journal(s) they were editing; see Fig. 4a–c for the three most extreme editors, and Supplementary Fig. 18 for the remaining 12. In these figures, random perturbations are added to the counts to preserve anonymity. Focusing on the most extreme editors, out of all the papers they published throughout their career, 72%, 66% and 65% were in their own journal(s) while they were serving as editors. These cases demonstrate that even if an editor publishes three-quarters of their entire career output in their own journal, they may continue to serve as editors for several decades. Similar trends were observed when considering the 15 (rather than the three) most extreme editors; see Supplementary Fig. 18. It is worth mentioning that 14 out of those editors are men, suggesting that women are less likely to engage in such extreme behaviour. Also noteworthy is the fact that 6 out of the 15 extreme editors are, in fact, editors-in-chief.

Having analysed extreme editors, let us now focus on the three extreme editorial boards corresponding to the journals with the highest percentage of papers authored by their editors. The results are depicted

in Fig. 4d–f, which follow a similar layout compared with our previous analysis of extreme editors. Starting with the most extreme journal (Fig. 4d), one-third (35%) of the papers published therein have an active editor among the authors. As for the second and third most extreme journals (Fig. 4e,f), one-fifth (about 20%) of the papers published therein include authors who happen to be active editors. These cases demonstrate that editorial board members can author a substantial share of the papers published in the journal, and continue to do so for several decades.

Discussion

Despite efforts to increase women's representation on editorial boards⁵⁷, the present findings reveal a persistent gender gap. Using an unprecedented dataset, our study contributes to the literature in two ways. First, we were able to examine the gender distribution among scientists and editors over the past five decades, revealing that the proportion of female editors persisted at about half that of female scientists, and that the proportion of female editors-in-chief has consistently been even smaller. Second, we were able to compare the gender gap across 15 disciplines, revealing that women have been consistently underrepresented among editors and editors-in-chief in every discipline other than Sociology. Furthermore, while gender disparity has often been measured in terms of impact^{58,59}, productivity⁵⁸ and career length⁴⁷, we showed that, at least for editors-in-chief, gender disparity goes beyond what is predicted by these numbers, indicating a systematic role for non-meritocratic factors in the selection of editors-in-chief. This resonates with the past findings that women face a 'glass ceiling' in their professional careers⁶⁰, and suggests that women face additional obstacles in being recognized as elite scientists in their respective disciplines. Overall, this study contributes to the literature advocating a more inclusive editorial board in particular, and a more inclusive scientific community in general^{29,61}.

We also showed that a substantial amount of editors publish in the journal they edit, and provided the first comparison, to our knowledge, of self-publication behaviour across disciplines and genders. As such, our study contributes to the line of research exploring gender differences in academia^{62–65}. Moreover, our unique dataset allowed us to understand how far editors can reach with their self-publication practice. Naturally, these findings raise the question: How much self-publication should be considered too much? Of course, there are perfectly innocuous explanations of why editors self-publish. Some may conduct research in a niche field with only a few alternative journals to publish in; others may be established scientists who self-publish their best works to boost the reputation of a young journal. Still, if there is anything that can be learned from recent scandals involving editors^{39,40,66,67}, it is that the power enjoyed by editors can be exploited. For instance, consider those editors-in-chief who self-publish at high rates, despite being responsible for overseeing the review process of every submission, including their own. To an external observer, it may not be entirely clear how such articles are handled to circumvent the apparent conflict of interest. By providing an overview of the status quo of self-publishing practice, our study contributes to the discussion of whether self-publications should be governed with more transparency.

Our study is not without limitations. First, our work comes with the inherent restrictions of observational studies. In particular, although we use standard techniques such as matching and randomized baseline models to further our understanding of gender inequality and self-publication patterns, it is hard to pinpoint the underlying mechanisms behind these findings; this constitutes a potential direction for future research. Second, all analyses are done using editor data collected from Elsevier. Although this is the largest publisher in academia, other publishers could also be explored, which is left to future studies. Lastly, to infer gender at scale, the only practical solution was to use algorithmic tools. Despite their advantages, such tools are not 100% accurate. Although we restricted our analysis to names that are

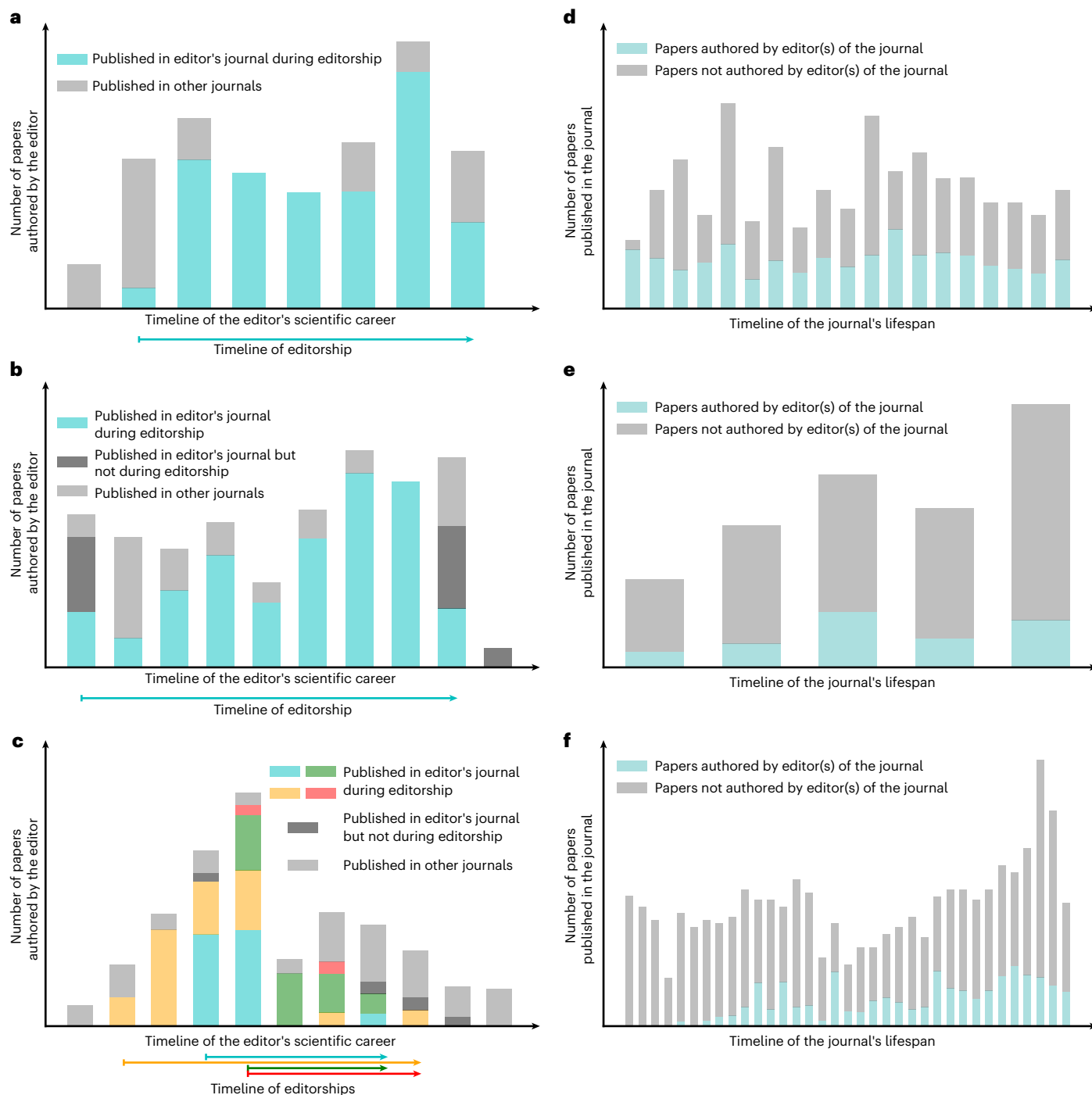


Fig. 4 | Extreme editors and extreme editorial boards. To preserve anonymity, ticks on the x axis and y axis are hidden and Gaussian noise is added to the bar heights. Out of all editors who publish at least 30 papers throughout their careers, subfigures (a), (b) and (c) correspond to the editor with the highest, second highest and third highest number of self-publications, respectively. For each of these editors, we show the total number of papers they publish as well as how many

of those papers are published in the editor's journal(s); results are aggregated over 5-year periods to preserve anonymity. The horizontal line(s) underneath the plot represent the span of the editorship(s). Out of all journals that have at least 30 papers, subfigures (d), (e) and (f) depict the journal with the highest, second highest and third highest proportion of papers whose authors include an editor of that journal, respectively.

classified with at least 90% accuracy throughout the study, manual classification is likely to be more accurate.

There is more to the story of scientific publishing than statistics. Behind the numbers, some editors stand up for a more transparent selection of papers, and actively recruit board members from under-represented groups, while others exploit their power to benefit their careers. After all, editors are humans. Our expectation of human

behaviour in imperfectly transparent institutions determines the narrative: Is it reassuring that the majority of editors hardly self-publish? Or is it striking that 11% of editors-in-chief publish at least one-third of their papers in the journal they edit? Should we be satisfied with the increasing proportion of female editors over the past decades? Or should we be concerned that, despite all efforts to promote gender equality, women are still underrepresented among editors in nearly all

disciplines? Either way, we hope our study, and the future work it may inspire, will contribute to a fairer, more transparent and more inclusive culture of scientific editorship.

Methods

Data

Data collection. Elsevier published 4,289 different journals in 2019, all of which are listed on ScienceDirect—a website operated by the publisher⁶⁸. Each journal curates some or all of its past issues, and all of the articles that appeared in every curated issue. In addition to research articles, many journals list their editors on the Editorial Board page, which can be found in the first volume of each issue. These pages, which constitute the primary source of our editor-related data, were retrieved using the Elsevier Article Retrieval API⁶⁹. In total, we collected 173,434 editorial board pages from 1,893 different journals. From these pages, we were able to extract the following information about each journal: title, issue, volume, discipline, publication date, editors' names, editors' affiliations and whether or not any given editor is an editor-in-chief. To retrieve the publication records of these editors, we paired them with scientists from the MAG dataset. In particular, an editor in Elsevier and a scientist in MAG are considered to be the same person if, and only if, they uniquely share the same name and affiliation. For details on how the name disambiguation problem is addressed in this study, see Supplementary Note 2. For any e, j pair, the first (last) year of editorship is assumed to be the publication year of the first (last) issue of j in which e is mentioned as an editor. Moreover, the editorial career of e (as an editor of j) is assumed to span the period between the first and last years of editorship (inclusive), implying that any gap years (if they exist) are included in our analysis. Similarly, the academic career of any scientist s is assumed to span the period between the publication years of their first and last papers. As a result, the academic age of s in any given year y is $y - \text{year}_{\text{first}}^s + 1$, where $\text{year}_{\text{first}}^s$ is the publication year of the first paper of s .

Editorials were then excluded from the publication record of each editor, to ensure that it consisted of scientific papers. To this end, we queried ScienceDirect to identify the type of each publication in Elsevier, and excluded over 13,000 publications falling under the following types: Book review, Conference info, Editorial, Encyclopedia, Erratum, News, Practice guideline and Product review. This left us with about 168,000 publications (co)authored by the 20,000 editors identified in MAG. Out of those publications, we randomly sampled 200 and manually verified that only two were, in fact, editorial pieces. Additionally, we manually examined all publications (co)authored by the three extreme editors considered in Fig. 4, and again found that only two were editorial pieces. This analysis suggests that our approach of identifying and excluding editorial pieces, while not perfect, is highly accurate.

Gender identification. Several gender classifiers have been proposed to date^{58,70,71}. Following other studies in the literature^{24,44–47}, we use *Genderize.io*, which has been shown to outperform other alternatives⁷⁰. This classifier integrates publicly available census statistics to build a name database, mapping names to binary gender labels. In our gender-related analysis, we only considered scientists whose first names were classified with a confidence of $\geq 90\%$.

Dataset evaluation. In our gender-based analysis, we considered a dataset consisting of the 81,000 editors whose gender has been identified by *Genderize.io* with confidence of $\geq 90\%$; let us denote this dataset by E_{gender} . On the other hand, when analysing the publication patterns of editors, we considered a dataset consisting of the 20,000 editors who had a unique matching entry in MAG, denoted by E_{MAG} . These two datasets are likely to exhibit biases as they were not randomly sampled from all 103,000 Elsevier editors, denoted by E_{all} . In this section, we aim to understand how these biases could affect our main findings.

We start off by comparing E_{gender} to E_{all} in terms of the relative size of each discipline. We found that the two are highly correlated ($r = 0.99$); see Supplementary Fig. 19a. High correlation could also be seen when comparing E_{MAG} with E_{all} ($r = 0.79$); see Supplementary Fig. 19b. Nevertheless, some disciplines are underrepresented compared with E_{all} , while others are overrepresented. As a result, the observed proportion of women in E_{gender} may differ from that in E_{all} , and the observed proportion of editors in E_{MAG} whose self-publication rates are $\geq 10\%$, \dots , $\geq 50\%$ may also differ from that in E_{all} . As shown in Supplementary Fig. 19a, Medicine is overrepresented in E_{gender} , which could affect our gender-based findings, especially as Medicine amounts to more than a fifth of all editors in E_{gender} . For instance, if this discipline happens to have fewer female editors than average, then our estimation of the gender gap (which is based on E_{gender}) would be an overestimation of the overall gender gap (that is, the one in E_{all}). To estimate the gender gap in E_{all} , we multiplied the proportion of women in each discipline in E_{gender} by the size of that discipline in E_{all} . Similarly, to estimate the percentage of editors whose self-publication rates are $\geq 10\%$, \dots , $\geq 50\%$ in E_{all} , we multiplied their proportion in each discipline in E_{MAG} by the size of that discipline in E_{all} . As a result, the proportion of female editors becomes 12.95% (instead of the originally estimated 13.53%), and the percentage of editors whose self-publication rate is $\geq 10\%$, $\geq 20\%$, $\geq 30\%$, $\geq 40\%$ and $\geq 50\%$ becomes 27.21%, 13.79%, 7.71%, 4.88% and 3.66%, respectively (instead of 24.79%, 12.34%, 6.79%, 4.33% and 3.27%, respectively). This suggests that the situation may be grimmer than originally estimated, as the gender gap seems to be larger, and self-publication seems to be more widespread, once we adjust for differences in discipline size.

Next, we examine how representative E_{MAG} is of E_{all} in terms of the editors' publication patterns. As there are no available datasets that provide the publication profiles of all 103,000 editors in E_{all} , a practical alternative is to compare E_{MAG} with a random sample of E_{all} , after manually identifying the publication profile of each sampled editor. Unfortunately, this approach also comes with its own limitations, as many editors do not have an online presence, making it extremely challenging, if not impossible, to manually identify their publication profile. With these limitations in mind, we sampled 500 editors from E_{all} and were able to manually identify the MAG entry of 264 of them using information available online; the set of those 264 editors is denoted by E_{manual} . Then, we compared E_{MAG} with E_{manual} in terms of the confounders examined earlier in Fig. 1, namely: paper count, citation count, collaborator count, h-index, academic age and percentage of those affiliated with a top 100 institution. We found significant differences between E_{MAG} and E_{manual} in terms of paper count, collaborator count, h-index and percentage of editors whose affiliation is among the top 100; see Supplementary Fig. 20. These differences may lead to a biased estimation of the percentage of each type of editor. As a sensitivity analysis, we re-sampled the editors in E_{MAG} so that the distributions of all confounders are similar to E_{manual} . After re-sampling, we found the percentage of editors whose self-publication rate is $\geq 10\%$, $\geq 20\%$, $\geq 30\%$, $\geq 40\%$ and $\geq 50\%$ becomes 24.23%, 12.72%, 7.61%, 5.02% and 4.04%, respectively (instead of 24.79%, 12.34%, 6.79%, 4.33% and 3.27%, respectively), and there is no significant difference between E_{MAG} and E_{manual} in terms of those percentages using two-sided Fisher's exact tests. This analysis suggests that the differences in the above confounders do not bias the estimation of the percentage of editors with high self-publication rates. Note that the aforementioned re-sampling is only done as a part of this sensitivity analysis, and does not affect any other result in our study.

Matching editors to scientists

In three parts of our study, we used matching techniques to compare editors against scientists with comparable attributes. This section provides detailed descriptions of each matching process.

First, in our descriptive analysis (Fig. 1), we aim to compare editors with average scientists who work in the same discipline and have the same academic age. Based on this, for each e, j pair, we compare e

to scientists whose discipline and academic birth year—the year when their first paper was published—are the same as that of e .

Second, as part of our analysis of gender disparity, we apply a matching technique (Fig. 2e) to test the hypothesis that the underrepresentation of female editors can be explained by their lower publication and citation rates. To this end, for any e, j pair we randomly sample 50 scientists whose discipline and academic birth year are the same as e , and whose productivity and impact by the end of year (e, j) are comparable with e (that is, they fall within the same decile computed over each discipline in the given year).

Third, in our analysis of self-publication patterns, we apply a matching technique (top row of Fig. 3f) to analyse the editors whose self-publication rate is higher than a certain percentage. Here, the hypothesis is that the observed self-publication rate of an editor e in their own journal j can be explained by characteristics of e that are unrelated to e becoming an editor. To this end, given an e, j pair, we match e to a scientist s who is not an editor of j based on a number of confounders, including the rate at which they publish in j . Ideally, the rate of e and s should be similar up to year (e, j) (this way, if their rate starts to diverge after year (e, j) , it suggests that the divergence is related to e becoming an editor of j). However, to increase the likelihood of finding a match for e , we do not require the rate of s to match that of e in year (e, j) , but rather in a year y such that $|\text{year}_0^{(e, j)} - y| \leq 3$. More specifically, we say that e matches s in year y if all of the following conditions are met:

- e and s have the same discipline.
- e and s have the same gender; for details on how gender is identified, see Gender identification.
- The rank of any first known affiliations of e and s fall in the same bin. Here, affiliations are ranked based on the 2019 Academic Ranking of World Universities (also known as the ‘Shanghai ranking’⁵⁶), and are divided into the following bins: [1, 20]; [21, 50]; [51, 100]; [101, 300]; [301, 600]; [601, 999]; [1000, ∞].
- The publication year of e 's first paper does not differ from that of s by more than 3 years.
- There exists a year, $y \in [\text{year}_0^{(e, j)} - 3, \text{year}_0^{(e, j)} + 3]$ such that:

The academic age of e in year (e, j) does not differ from that of s in y by more than 10%.

The percentage of papers that e published in j in year (e, j) does not differ from that of s in y by more than 10%.

The percentage of papers that e published in j up to year (e, j) does not differ from that of s in y by more than 10%.

Reporting summary

Further information on research design is available in the Nature Portfolio Reporting Summary linked to this article.

Data availability

Our editors’ dataset was collected from Elsevier’s ScienceDirect database. A formal agreement between us and Elsevier mandates that data copied from the subscribed products cannot be provided to third parties in any substantial or systematic manner. However, for transparency reasons, we provide a sample set of 10 editors, which can be used to test the code for data collection and analysis, along with anonymized data for reproducing figures, all the while ensuring that our agreement with Elsevier is not breached. As for our publications’ dataset, that is, the Microsoft Academic Graph, a copy of it is available at <https://zenodo.org/record/2628216#.Y4i9mnbP2UI> (ref. 72); a small subset of MAG that is sufficient to test our code is also provided. To retrieve the aforementioned datasets, visit the following link: <https://github.com/Michael98Liu/fair-and-inclusive-scientific-publishing/tree/main/data> (ref. 73). If you would like to obtain permission to collect and analyse data provided by Elsevier, please contact their customer consultant at k.bevillacqua@elsevier.com.

Code availability

The Python code used to collect and clean the editors’ dataset, as well as the code used in the analysis and visualizations, are all freely available to download from <https://github.com/Michael98Liu/fair-and-inclusive-scientific-publishing>.

References

1. Nielsen, M. W. & Andersen, J. P. Global citation inequality is on the rise. *Proc. Natl Acad. Sci. USA* **118**, e2012208118 (2021).
2. Huber, J. et al. Nobel and novice: author prominence affects peer review. *Proc. Natl Acad. Sci. USA* **119**, e2205779119 (2022).
3. Wapman, K. H., Zhang, S., Clauset, A. & Larremore, D. B. Quantifying hierarchy and dynamics in US faculty hiring and retention. *Nature* **610**, 120–127 (2022).
4. Gomez, C. J., Herman, A. C. & Parigi, P. Leading countries in global science increasingly receive more citations than other countries doing similar research. *Nat. Hum. Behav.* **6**, 919–929 (2022).
5. Ploszaj, A., Celinska-Janowicz, D. & Olechnicka, A. Core-periphery relations in international research collaboration. In *STI 2018 Conference Proceedings* (eds. Costas, R., Franssen, T., Yegros-Yegros, A.) 1322–1327 (Centre for Science and Technology Studies (CWTS), 2018).
6. Newton, D. P. Quality and peer review of research: an adjudicating role for editors. *Account. Res.* **17**, 130–145 (2010).
7. Burgess, T. F. & Shaw, N. E. Editorial board membership of management and business journals: a social network analysis study of the Financial Times. *Br. J. Manag.* **21**, 627–648 (2010).
8. Campanario, J. M. The competition for journal space among referees, editors, and other authors and its influence on journals’ impact factors. *J. Am. Soc. Inf. Sci.* **47**, 184–192 (1996).
9. Dhanani, A. & Jones, M. J. Editorial boards of accounting journals: gender diversity and internationalisation. *Account. Audit. Account. J.* **30**, 1008–1040 (2017).
10. Mauleón, E., Hillán, L., Moreno, L., Gómez, I. & Bordons, M. Assessing gender balance among journal authors and editorial board members. *Scientometrics* **95**, 87–114 (2013).
11. Morgan, A. C. et al. The unequal impact of parenthood in academia. *Sci. Adv.* **7**, eabd1996 (2021).
12. Witteman, H. O., Hendricks, M., Straus, S. & Tannenbaum, C. Are gender gaps due to evaluations of the applicant or the science? a natural experiment at a national funding agency. *Lancet* **393**, 531–540 (2019).
13. Rotenstein, L. S. & Jena, A. B. Lost taussigs—the consequences of gender discrimination in medicine. *N. Engl. J. Med.* **378**, 2255–2257 (2018).
14. Leslie, S.-J., Cimpian, A., Meyer, M. & Freeland, E. Expectations of brilliance underlie gender distributions across academic disciplines. *Science* **347**, 262–265 (2015).
15. Wold, A. & Wennerås, C. Nepotism and sexism in peer review. *Nature* **387**, 341–343 (1997).
16. Widhall, S. E. AAAS presidential lecture: voices from the pipeline. *Science* **241**, 1740–1745 (1988).
17. Lincoln, A. E., Pincus, S. H. & Leboy, P. S. Scholars’ awards go mainly to men. *Nature* **469**, 472–472 (2011).
18. Nittrouer, C. L. et al. Gender disparities in colloquium speakers at top universities. *Proc. Natl Acad. Sci. USA* **115**, 104–108 (2018).
19. Davidson, N. R. & Greene, C. S. Analysis of science journalism reveals gender and regional disparities in coverage. Preprint at *bioRxiv* <https://doi.org/10.1101/2021.06.21.449261> (2022).
20. Dickersin, K., Fredman, L., Flegal, K. M., Scott, J. D. & Crawley, B. Is there a sex bias in choosing editors? Epidemiology journals as an example. *JAMA* **280**, 260–264 (1998).
21. Kennedy, B. L., Lin, Y. & Dickstein, L. J. Women on the editorial boards of major journals. *Acad. Med.* **76**, 849–851 (2001).

22. Amrein, K., Langmann, A., Fahrleitner-Pammer, A., Pieber, T. R. & Zollner-Schwetz, I. Women underrepresented on editorial boards of 60 major medical journals. *Gen. Med.* **8**, 378–387 (2011).
23. Ioannidou, E. & Rosania, A. Under-representation of women on dental journal editorial boards. *PLoS ONE* **10**, e0116630 (2015).
24. Topaz, C. M. & Sen, S. Gender representation on journal editorial boards in the mathematical sciences. *PLoS ONE* **11**, e0161357 (2016).
25. Khan, M. S. et al. More talk than action: gender and ethnic diversity in leading public health universities. *Lancet* **393**, 594–600 (2019).
26. Salazar, J. W., Claytor, J. D., Habib, A. R., Guduguntla, V. & Redberg, R. F. Gender, race, ethnicity, and sexual orientation of editors at leading medical and scientific journals: a cross-sectional survey. *JAMA Intern. Med.* **181**, 1248–1251 (2021).
27. Palser, E. R., Lazerwitz, M. & Fotopoulou, A. Gender and geographical disparity in editorial boards of journals in psychology and neuroscience. *Nat. Neurosci.* **25**, 272–279 (2022).
28. Berenbaum, M. R. Speaking of gender bias. *Proc. Natl Acad. Sci. USA* **116**, 8086–8088 (2019).
29. Silver, J. K. Gender equity on journal editorial boards. *Lancet* **393**, 2037–2038 (2019).
30. Beath, C., Chan, Y., Davison, R. M., Dennis, A. R. & Recker, J. C. Editorial board diversity at the basket of eight journals: a report to the college of senior scholars. *Commun. Assoc. Inf. Syst.* **48**, 236–247 (2021).
31. Rawat, S. & Meena, S. Publish or perish: where are we heading? *J. Res. Med. Sci.* **19**, 87 (2014).
32. Luty, J., Arokiadass, S. M. R., Easow, J. M. & Anapreddy, J. R. Preferential publication of editorial board members in medical specialty journals. *J. Med. Ethics* **35**, 200–202 (2009).
33. Youk, S. & Park, H. S. Where and what do they publish? Editors' and editorial board members' affiliated institutions and the citation counts of their endogenous publications in the field of communication. *Scientometrics* **120**, 1237–1260 (2019).
34. Bošnjak, L., Puljak, L., Vukojević, K. & Marušić, A. Analysis of a number and type of publications that editors publish in their own journals: case study of scholarly journals in Croatia. *Scientometrics* **86**, 227–233 (2011).
35. Mani, J. et al. I publish in I edit? Do editorial board members of urologic journals preferentially publish their own scientific work? *PLoS ONE* **8**, e83709 (2013).
36. Rösing, C. K., Junges, R. & Haas, A. N. Publication rates of editorial board members in oral health journals. *Braz. Oral Res.* **28**, 1–5 (2014).
37. Zdeněk, R. & Lososová, J. An analysis of editorial board members' publication output in agricultural economics and policy journals. *Scientometrics* **117**, 563–578 (2018).
38. Walters, W. H. Do editorial board members in library and information science publish disproportionately in the journals for which they serve as board members? *J. Sch. Publ.* **46**, 343–354 (2015).
39. Eiko. 7 sternberg papers: 351 references, 161 self-citations. <https://web.archive.org/web/2021106054413/https://eiko-fried.com/sternberg-selfcitations/> (2018).
40. Schiermeier, Q. Self-publishing editor set to retire. *Nature* **456**, 432 (2008).
41. Abdel-Baset, M., Chang, V. & Gamal, A. Evaluation of the green supply chain management practices: a novel neutrosophic approach. *Comput. Indust.* **108**, 210–220 (2019).
42. Abdel-Baset, M., Chang, V., Gamal, A. & Smarandache, F. An integrated neutrosophic anp and vikor method for achieving sustainable supplier selection: A case study in importing field. *Comput. Indust.* **106**, 94–110 (2019).
43. RELX. Annual report and financial statements. <https://www.relx.com/~media/Files/R/RELX-Group/documents/reports/annual-reports/2020-annual-report.pdf> (2020).
44. AlShebli, B. K., Rahwan, T. & Woon, W. L. The preeminence of ethnic diversity in scientific collaboration. *Nat. Commun.* **9**, 5163 (2018).
45. Jadidi, M., Karimi, F., Lietz, H. & Wagner, C. Gender disparities in science? Dropout, productivity, collaborations and success of male and female computer scientists. *Adv. Complex Sys.* **21**, 1750011 (2018).
46. Holman, L., Stuart-Fox, D. & Hauser, C. E. The gender gap in science: how long until women are equally represented? *PLoS Biol.* **16**, e2004956 (2018).
47. Huang, J., Gates, A. J., Sinatra, R. & Barabási, A.-L. Historical comparison of gender inequality in scientific careers across countries and disciplines. *Proc. Natl Acad. Sci. USA* **117**, 4609–4616 (2020).
48. Sinha, A. et al. An overview of Microsoft Academic Service (MAS) and applications. In *Proc. of the 24th International Conference on World Wide Web (General Chairs: Gangemi, A., Leonardi, S., Panconesi, A.)* 243–246 (Association for Computing Machinery, New York, NY, United States, 2015).
49. Wang, K. et al. A review of Microsoft Academic Services for science of science studies. *Front. Big Data* **2**, 45 (2019).
50. Benson, A. R., Abebe, R., Schaub, M. T., Jadbabaie, A. & Kleinberg, J. Simplicial closure and higher-order link prediction. *Proc. Natl Acad. Sci. USA* **115**, E11221–E11230 (2018).
51. Frank, M. R., Wang, D., Cebrian, M. & Rahwan, I. The evolution of citation graphs in artificial intelligence research. *Nat. Mach. Intell.* **1**, 79–85 (2019).
52. Murphy, M. C. et al. Open science, communal culture, and women's participation in the movement to improve science. *Proc. Natl Acad. Sci. USA* **117**, 24154–24164 (2020).
53. Yang, Y., Youyou, W. & Uzzi, B. Estimating the deep replicability of scientific findings using human and artificial intelligence. *Proc. Natl Acad. Sci. USA* **117**, 10762–10768 (2020).
54. Peng, H., Ke, Q., Budak, C., Romero, D. M. & Ahn, Y.-Y. Neural embeddings of scholarly periodicals reveal complex disciplinary organizations. *Sci. Adv.* **7**, eabb9004 (2021).
55. Gomez, C. J., Herman, A. C. & Parigi, P. Leading countries in global science increasingly receive more citations than other countries doing similar research. *Nat. Hum. Behav.* **6**, 919–929 (2022).
56. Academic ranking of world universities 2019. <https://web.archive.org/web/20210424072147/http://www.shanghairanking.com/ARWU2019.html> (accessed 24 April 2021) (2019).
57. Logan, D. The importance of a gender-balanced editorial team: narrowing the gender gap begins with all of us. <https://www.elsevier.com/connect/archive/editors-update/The-importance-of-a-gender-balanced-editorial-team> (2016).
58. Larivière, V., Ni, C., Gingras, Y., Cronin, B. & Sugimoto, C. R. Bibliometrics: global gender disparities in science. *Nature* **504**, 211 (2013).
59. Caplar, N., Tacchella, S. & Birrer, S. Quantitative evaluation of gender bias in astronomical publications from citation counts. *Nat. Astron.* **1**, 1–5 (2017).
60. Cotter, D. A., Hermsen, J. M., Ovadia, S. & Vanneman, R. The glass ceiling effect. *Social Forces* **80**, 655–681 (2001).
61. Stewart, A. J. & Valian, V. *An Inclusive Academy: Achieving Diversity and Excellence* (MIT Press, 2018).
62. Pezzoni, M., Mairesse, J., Stephan, P. & Lane, J. Gender and the publication output of graduate students: a case study. *PLoS ONE* **11**, e0145146 (2016).
63. Nguyen, M. et al. Variation in research experiences and publications during medical school by sex and race and ethnicity. *JAMA Netw. Open* **5**, e2238520–e2238520 (2022).

64. Lerman, K., Yu, Y., Morstatter, F. & Pujara, J. Gendered citation patterns among the scientific elite. *Proc. Natl Acad. Sci. USA* **119**, e2206070119 (2022).
65. King, M. M., Bergstrom, C. T., Correll, S. J., Jacquet, J. & West, J. D. Men set their own cites high: gender and self-citation across fields and over time. *Socius* **3**, 2378023117738903 (2017).
66. Lockwood, M. Editorial: citation malpractice. *Proc. Royal Soc. A* **476**, 20200746 (2020).
67. Van Noorden, R. Highly cited researcher banned from journal board for citation abuse. *Nature* **578**, 200–201 (2020).
68. ScienceDirect. Journals and books. <https://web.archive.org/web/20200907115741/https://www.sciencedirect.com/browse/journals-and-books> (2020).
69. Elsevier Developer Portal. Article (full text) retrieval API. <https://dev.elsevier.com/documentation/ArticleRetrievalAPI.wadl> (2020).
70. Wais, K. Gender prediction methods based on first names with genderizeR. *R Journal* **8**, 17–37 (2016).
71. West, J. D., Jacquet, J., King, M. M., Correll, S. J. & Bergstrom, C. T. The role of gender in scholarly authorship. *PLoS ONE* **8**, e66212 (2013).
72. Microsoft Academic. Microsoft academic graph (2019-03-22). Zenodo <https://doi.org/10.5281/zenodo.2628216> (2019).
73. Liu, F., Holme, P., Chiesa, M., AlShebli, B. & Rahwan, T. Gender inequality and self-publication are common among academic editors. GitHub <https://doi.org/10.5281/zenodo.6657094> (2019).

Acknowledgements

We gratefully acknowledge support and resources from the High Performance Computing Center at New York University Abu Dhabi. We thank A. Kyriazidou and C. Haefke for their feedback and comments, which improved the paper. This work was supported by the New York University Abu Dhabi (Global PhD Student Fellowship to F.L.) and JSPS KAKENHI (grant no. JP21H04595 to P.H.). The funders had no role in study design, data collection and analysis, decision to publish or preparation of the manuscript.

Author contributions

B.A., M.C. and T.R. conceptualized the project. B.A., F.L., P.H. and T.R. were responsible for the methodology. B.A. and F.L. collected and

processed the data. B.A. F.L., P.H. and T.R. did the visualization. B.A. and T.R. supervised the study. B.A., F.L., P.H. and T.R. wrote the paper.

Competing interests

The authors declare no competing interests.

Additional information

Supplementary information The online version contains supplementary material available at <https://doi.org/10.1038/s41562-022-01498-1>.

Correspondence and requests for materials should be addressed to Bedoor AlShebli or Talal Rahwan.

Peer review information *Nature Human Behaviour* thanks the anonymous reviewers for their contribution to the peer review of this work.

Reprints and permissions information is available at www.nature.com/reprints.

Publisher's note Springer Nature remains neutral with regard to jurisdictional claims in published maps and institutional affiliations.

Open Access This article is licensed under a Creative Commons Attribution 4.0 International License, which permits use, sharing, adaptation, distribution and reproduction in any medium or format, as long as you give appropriate credit to the original author(s) and the source, provide a link to the Creative Commons license, and indicate if changes were made. The images or other third party material in this article are included in the article's Creative Commons license, unless indicated otherwise in a credit line to the material. If material is not included in the article's Creative Commons license and your intended use is not permitted by statutory regulation or exceeds the permitted use, you will need to obtain permission directly from the copyright holder. To view a copy of this license, visit <http://creativecommons.org/licenses/by/4.0/>.

© The Author(s) 2023

Reporting Summary

Nature Portfolio wishes to improve the reproducibility of the work that we publish. This form provides structure for consistency and transparency in reporting. For further information on Nature Portfolio policies, see our [Editorial Policies](#) and the [Editorial Policy Checklist](#).

Statistics

For all statistical analyses, confirm that the following items are present in the figure legend, table legend, main text, or Methods section.

- | | |
|-------------------------------------|--|
| n/a | Confirmed |
| <input type="checkbox"/> | <input checked="" type="checkbox"/> The exact sample size (n) for each experimental group/condition, given as a discrete number and unit of measurement |
| <input type="checkbox"/> | <input checked="" type="checkbox"/> A statement on whether measurements were taken from distinct samples or whether the same sample was measured repeatedly |
| <input type="checkbox"/> | <input checked="" type="checkbox"/> The statistical test(s) used AND whether they are one- or two-sided <i>Only common tests should be described solely by name; describe more complex techniques in the Methods section.</i> |
| <input type="checkbox"/> | <input checked="" type="checkbox"/> A description of all covariates tested |
| <input type="checkbox"/> | <input checked="" type="checkbox"/> A description of any assumptions or corrections, such as tests of normality and adjustment for multiple comparisons |
| <input type="checkbox"/> | <input checked="" type="checkbox"/> A full description of the statistical parameters including central tendency (e.g. means) or other basic estimates (e.g. regression coefficient) AND variation (e.g. standard deviation) or associated estimates of uncertainty (e.g. confidence intervals) |
| <input type="checkbox"/> | <input checked="" type="checkbox"/> For null hypothesis testing, the test statistic (e.g. F , t , r) with confidence intervals, effect sizes, degrees of freedom and P value noted <i>Give P values as exact values whenever suitable.</i> |
| <input checked="" type="checkbox"/> | <input type="checkbox"/> For Bayesian analysis, information on the choice of priors and Markov chain Monte Carlo settings |
| <input checked="" type="checkbox"/> | <input type="checkbox"/> For hierarchical and complex designs, identification of the appropriate level for tests and full reporting of outcomes |
| <input checked="" type="checkbox"/> | <input type="checkbox"/> Estimates of effect sizes (e.g. Cohen's d , Pearson's r), indicating how they were calculated |

Our web collection on [statistics for biologists](#) contains articles on many of the points above.

Software and code

Policy information about [availability of computer code](#)

- | | |
|-----------------|---|
| Data collection | Data about editors was collected using Elsevier's Article Retrieval API: https://dev.elsevier.com/documentation/ArticleRetrievalAPI.wadl Data about the publication records of individual scientists was retrieved from the Microsoft Academic Graph website. The gender of the authors in the dataset, was collected from the API of Genderize.io. The code used to collect and clean data can be found in our Github repository (https://github.com/Michael98Liu/fair-and-inclusive-scientific-publishing/tree/main/data_collection). |
| Data analysis | Data analysis was done using computer programs written in the Python programming language (version 3.8.5). You can find the code in our Github repository (https://github.com/Michael98Liu/fair-and-inclusive-scientific-publishing/). |

For manuscripts utilizing custom algorithms or software that are central to the research but not yet described in published literature, software must be made available to editors and reviewers. We strongly encourage code deposition in a community repository (e.g. GitHub). See the Nature Portfolio [guidelines for submitting code & software](#) for further information.

Data

Policy information about [availability of data](#)

All manuscripts must include a [data availability statement](#). This statement should provide the following information, where applicable:

- Accession codes, unique identifiers, or web links for publicly available datasets
- A description of any restrictions on data availability
- For clinical datasets or third party data, please ensure that the statement adheres to our [policy](#)

Our editors' dataset was collected from Elsevier's ScienceDirect database. A formal agreement between us and Elsevier mandates that data copied from the subscribed products cannot be provided to third parties in any substantial or systematic manner. However, for transparency reasons, we provide a sample set of 10 editors, which can be used to test the code for data collection and analysis, along with anonymized data for reproducing figures, all the while ensuring that our agreement with Elsevier is not breached. As for our publications' dataset, i.e., the Microsoft Academic Graph, a copy of it is available at <https://zenodo.org/record/2628216#.Yx9BbexBza4>; a small subset of MAG that is sufficient to test our code is also provided. To retrieve the aforementioned datasets, visit <https://github.com/Michael98Liu/fair-and-inclusive-scientific-publishing/tree/main/data>.

Human research participants

Policy information about [studies involving human research participants and Sex and Gender in Research](#).

| | |
|-----------------------------|---|
| Reporting on sex and gender | <input type="text" value="There were no participants involved."/> |
| Population characteristics | <input type="text" value="See above."/> |
| Recruitment | <input type="text" value="There were no participants involved."/> |
| Ethics oversight | <input type="text" value="There were no participants involved."/> |

Note that full information on the approval of the study protocol must also be provided in the manuscript.

Field-specific reporting

Please select the one below that is the best fit for your research. If you are not sure, read the appropriate sections before making your selection.

- Life sciences Behavioural & social sciences Ecological, evolutionary & environmental sciences

For a reference copy of the document with all sections, see [nature.com/documents/nr-reporting-summary-flat.pdf](https://www.nature.com/documents/nr-reporting-summary-flat.pdf)

Behavioural & social sciences study design

All studies must disclose on these points even when the disclosure is negative.

| | |
|-------------------|---|
| Study description | <input type="text" value="We use matching techniques to study the relationship between editors assuming their roles and their publication patterns. We used randomized baseline models to understand the relationship between the population of female scientists and female editors. The data is quantitative."/> |
| Research sample | <input type="text" value="We focus on all Elsevier journals, and study all editors whose name can be automatically retrieved from Elsevier database using the aforementioned computer program and API. Data is collected using computer program, and therefore demographics information is not available. The sample of editors that we study is not meant to be a representative sample of all editors in the world. We choose to study Elsevier because it is one of the largest publishers, by generating one fifth of global research output, and garnering one quarter of citations worldwide."/> <input type="text" value="This study also uses an existing dataset called the Microsoft Academic Graph (MAG, source: https://www.microsoft.com/en-us/research/project/microsoft-academic-graph)."/> |
| Sampling strategy | <input type="text" value="We use convenience sampling. Our sample consists of all those whose name can be automatically extracted from Elsevier database. No sample-size calculation was performed; rather, we study all 103,000 editors whose name is identifiable. These data is sufficient since they cover 15 different scientific disciplines, and span over four decades."/> |
| Data collection | <input type="text" value="The publication dataset was downloaded from Microsoft Academic Graph's website. The editors dataset was collected using Elsevier's Article Retrieval API. There were no participants involved; researchers were aware of the research hypothesis during data collection."/> |
| Timing | <input type="text" value="The data was collected in January 2020."/> |

Data exclusions

In order to perform gender-related analysis, we identify the gender 81,000 editors with at least 90% accuracy. The remaining ones were excluded from our gender-based analysis. This exclusion criteria was pre-determined, following past studies.

In order to perform bibliometrics analysis, we were able to identify the publication records of 20,000 editors. The remaining ones were excluded from our bibliometrics analysis. This exclusion criteria was pre-determined to avoid the arduous task of manually identifying editors from over 200 million scientists recorded in MAG.

For more discussion regarding the mentioned data exclusion, please see the “Dataset Evaluation” subsection in the Methods section of our main manuscript.

Non-participation

There were no participants involved.

Randomization

There were no participants involved.

Reporting for specific materials, systems and methods

We require information from authors about some types of materials, experimental systems and methods used in many studies. Here, indicate whether each material, system or method listed is relevant to your study. If you are not sure if a list item applies to your research, read the appropriate section before selecting a response.

Materials & experimental systems

- | n/a | Involvement | Material/System |
|-------------------------------------|--------------------------|-------------------------------|
| <input checked="" type="checkbox"/> | <input type="checkbox"/> | Antibodies |
| <input checked="" type="checkbox"/> | <input type="checkbox"/> | Eukaryotic cell lines |
| <input checked="" type="checkbox"/> | <input type="checkbox"/> | Palaeontology and archaeology |
| <input checked="" type="checkbox"/> | <input type="checkbox"/> | Animals and other organisms |
| <input checked="" type="checkbox"/> | <input type="checkbox"/> | Clinical data |
| <input checked="" type="checkbox"/> | <input type="checkbox"/> | Dual use research of concern |

Methods

- | n/a | Involvement | Method |
|-------------------------------------|--------------------------|------------------------|
| <input checked="" type="checkbox"/> | <input type="checkbox"/> | ChIP-seq |
| <input checked="" type="checkbox"/> | <input type="checkbox"/> | Flow cytometry |
| <input checked="" type="checkbox"/> | <input type="checkbox"/> | MRI-based neuroimaging |