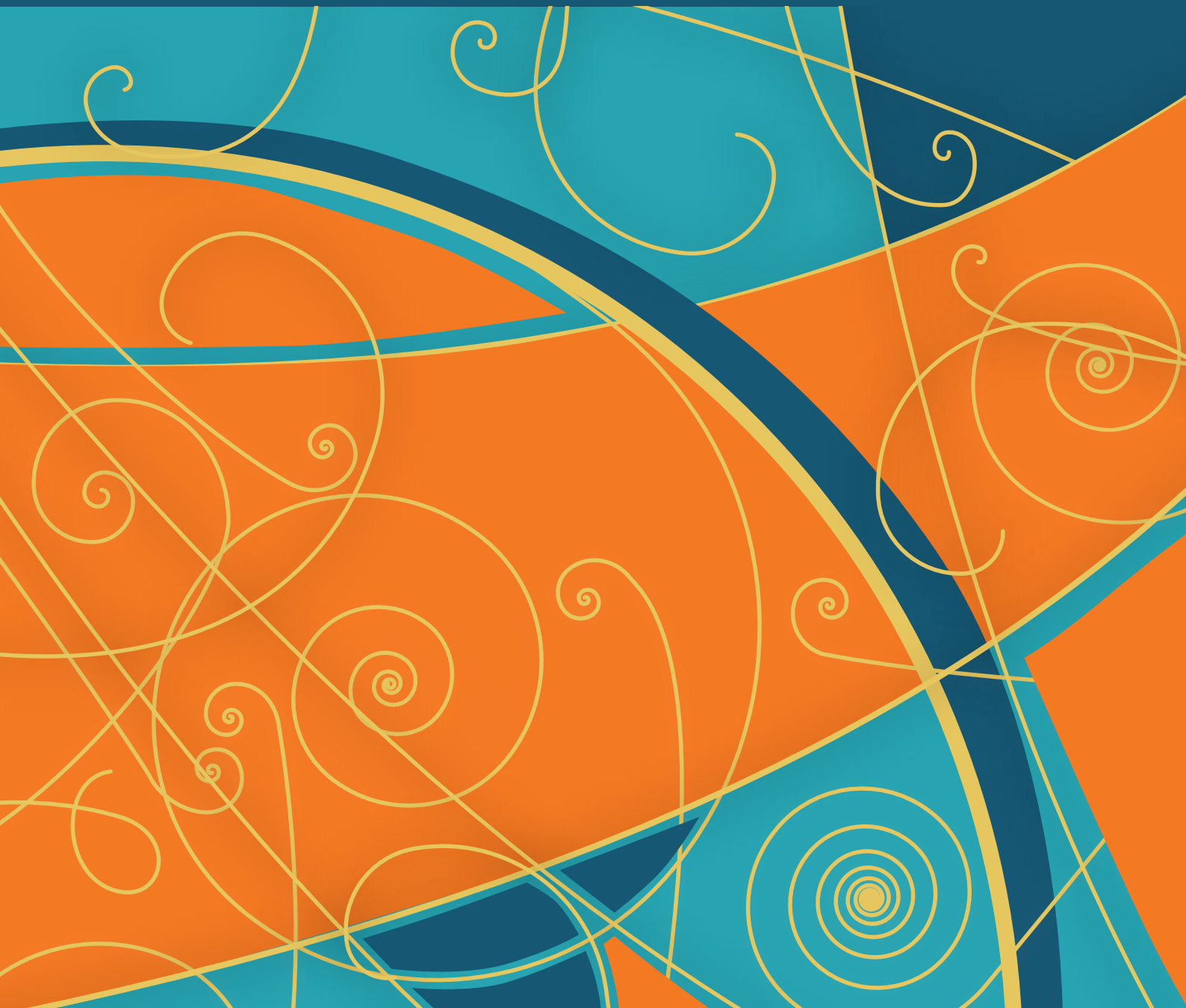


**nature**  
**REVIEWS** **PHYSICS**



**LAUNCHING IN 2019**

[nature.com/natrevphys](http://nature.com/natrevphys)

What is the best method/  
technique/device?

**Technical review**

Overview of the current  
state-of-the-art capabilities  
in a certain area.

Where is this field going/  
what are the latest trends?

**Expert recommendation**

Collective opinion piece  
suggesting a course of action,  
best scientific practices or  
methodological guidelines.

How to set up an  
experiment/analyse data?

**Roadmap**

Forward-looking outline of  
the scientific and technical  
challenges and opportunities  
in a certain field or for a  
specific big project.

What are the best practices?  
'How To' guidelines.

**Perspective**

An opinionated review on an  
emerging field. More forward-  
looking and/or speculative  
than a regular Review.

Where to find a timely  
discussion and  
broader context?

**Comment**

Personal opinion pieces on  
policy, science and society,  
or purely scientific issues  
in physics.

**Review**

An accessible, authoritative  
and balanced survey of  
recent developments in a  
certain area.

**News & Views**

**Research Highlights**

**Meeting Reports**

**Editorials**



# NATURE REVIEWS PHYSICS

## CONTENT TYPES

### Review

A Review is an authoritative, balanced survey of recent developments in a research field. Although Reviews should be recognized as scholarly by specialists in the field, they should be written with a view to informing non-specialist readers. Thus, Reviews should be presented using simple prose, avoiding excessive jargon and technical detail.

Reviews are approximately 6,000 words long and typically include 7 display items (figures, tables or boxes). As a guideline, Reviews can contain up to 150 references, citations should be selective, and footnotes are not used. The scope of a Review should be broad enough that it is not dominated by the work of a single research institution and particularly not by the authors' own work.

### Perspective

A Perspective is an opinionated review on an emerging field. They are more forward-looking and/or speculative than Reviews and may have a narrower scope. Despite being opinionated, they should remain balanced and are intended to stimulate discussion and new approaches.

Perspectives should typically be no more than 5,000 words long and include no more than 5 display items (figures, tables or boxes). Citations in Perspectives should be selective and as a guideline there should usually be no more than 100 references.

### Roadmap

A Roadmap is a forward-looking outline of the scientific and technical challenges and opportunities in a certain field or for a specific big project. Roadmaps provide a sense of direction and set out the necessary steps that probably need to be achieved. They may also list a set of open questions. Roadmaps are authored by panels of experts.

Roadmaps are approximately 6,000–8,000 words long and typically include 7 display items (figures, tables or boxes). As a guideline, they allow up to 150 references.

### Technical Review

A Technical Review surveys the current of state-of-the-art capabilities in a certain area. Technical Reviews provide accessible summaries of the state-of-the-art figures of merit for techniques, devices and/or materials; comparisons of different methods with an overview of their applicability;

comparisons of scientific software codes for specific applications; guidelines for data analysis of specific datasets and in particular large data releases from big instruments.

Technical Reviews are approximately 6,000 words long and typically include 7 display items and 150 references.

### Expert Recommendation

Expert Recommendations are collective opinion pieces, authored by panels of specialists, that present the outcome of an analysis or discussion, and suggest a course of action, best scientific practices or methodological guidelines.

Expert Recommendations are typically 1,500–2,000 words long and may include up to 4 display items and 50 references.

### News & Views

News & Views articles discuss recent results (from three or more papers published in Nature journals or elsewhere) providing context and analysis. News & Views articles are no more than 1,000 words long and may contain a maximum of 5 references.

### Meeting Report

Meeting Reports are summaries of a recent conference or discussion meeting outlining new developments in a specific field or a certain topic, written by a participant. The articles are no more than 1,000 words long and may contain a maximum of 5 references.

### Comment

Comment articles can focus on policy, science and society, or purely scientific issues in physics. Single-author articles are preferred as this is an 'opinion' section of the journal. Comments are usually commissioned by the editors, but proposals are welcome. They should be of immediate interest to a broad readership and should be written in an accessible, non-technical style. The option to include a single display item (figure, table or box) can be discussed with the editor. Comments are typically no longer than 1,300 words and, as a guideline, allow up to 5 references.

### Feature

Feature articles are written or commissioned by the journal editors. However, we do consider pitches for exclusive stories, particularly conference coverage from locations where we do not have staff, or reports from interesting field work.



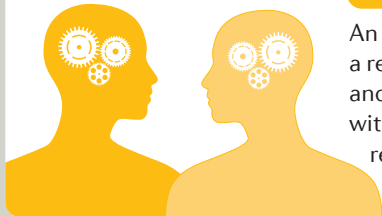
Launching in January 2019

# nature REVIEWS

## WRITING FOR NATURE REVIEWS

At the *Nature Reviews* journals, our teams of in-house editors, art editors, production editors and copy editors work together with authors to produce authoritative, accessible, high-quality articles.

### COMMISSION



An editor commissions a review-type article and works together with the author(s) to refine the scope

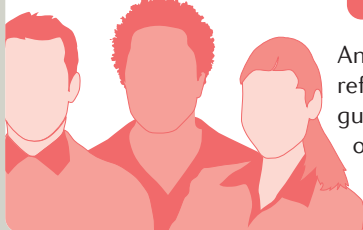
### FEEDBACK

An editor provides feedback on the synopsis and the submitted manuscript

- Content and scope
- Structure
- Accessibility
- Suitability of display items



### PEER REVIEW



An editor selects suitable referees and provides guidance to authors on how to address the referees' comments

### EDIT

An editor thoroughly edits the manuscript

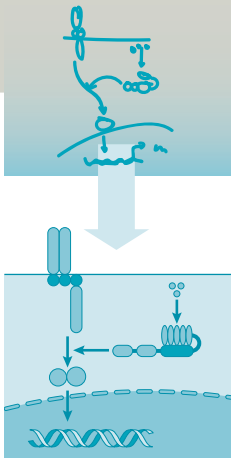
- Structure
- Flow
- Scientific correctness
- Clarity
- Language
- Consistency



### ARTWORK

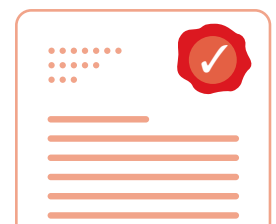
An art editor develops and redraws the figures in the style of *Nature Reviews*

- Clarity
- Flow
- Consistency
- Presentation



### ACCEPT

An editor accepts the article and hands it over to our production team



### COPY-EDITING AND PROOFS

A copy editor edits the text and the figures, and a production editor prepares the article proofs

- House style
- Grammar
- Spelling
- Nomenclature
- Consistency



### PUBLICATION

We promote your article after publication (for example, through email alerts and on social media platforms)

